

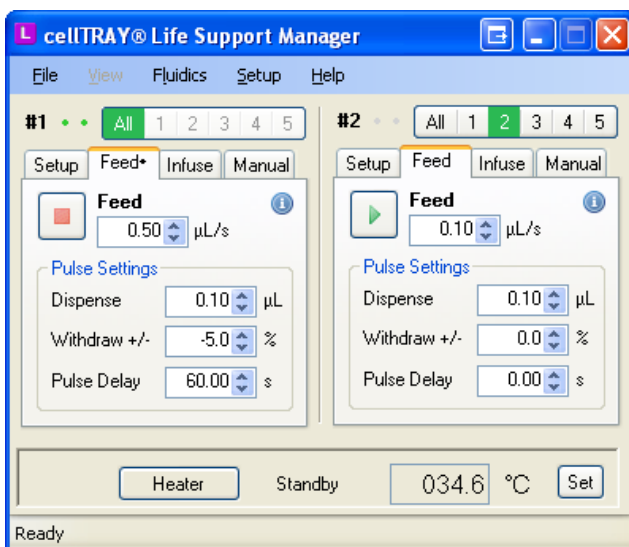
cellTRAY Fluidics System CT-2000F Solution	
<ul style="list-style-type: none"> • Fluidics Controller • Manifold with Heater Assembly • Manifold Base Assembly • Custom Tubing • cellTRAY Life Support Manager Software • cellTRAY dish – 25 units • cellTRAY slide – 3 units • USB cable • Travel Case 	



300 µm cellTRAY CT-2301 Slide Properties	
Size:	1 " x 3" x 1.3mm
Material:	Borosilicate Glass / Silicon
Cell Lifetimes:	> 48 Hours ⁱ
Total Wells:	112
Well Depth	220 µm
# Regions	14
# Wells / Region	8
Well Volume	18 nL
Channel Volume	1.6 µL
Total Region Volume	1.6 µL
Total Volume	31.6 µL

cellTRAY Life Support Manager Software Computer Requirements	
<ul style="list-style-type: none"> • 800 MHz Pentium III or equivalent • 512 MB RAM (memory) • 100 MB Hard Disk Drive • 1x USB 2.0 port • Windows XP or Vista 	

Microscope Pre-Requisites	
<ul style="list-style-type: none"> • Inverted (10x objective) • Well plate holder • Regulated CO₂ supply (optional) 	



Manifold with Heater Assembly	
<ul style="list-style-type: none"> • Temperature Range from 20° - 40° C • 0.1° C Temperature Stability • 10 isolated Regions • Well plate form factor 	

Fluidics Controller	
<ul style="list-style-type: none"> • 0.07 µL Step Resolution • 0.1 – 50 µL/sec. • Two paired pump sets • Controlled by cellTRAY Life Support Manager 	

ⁱ Using the cellTRAY Fluidics System CT-2000F